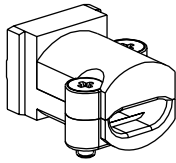


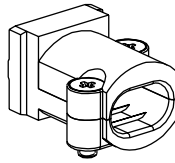
The reproduction, distribution and utilization of this document as well as the communication of its contents to others without express authorization is prohibited. Offenders will be held liable for the payment of damages. All rights reserved in the event of the grant of a patent, utility model or design.

Verwendbar in Hauben Gr. 1-4 / Available in the hoods size 1-4

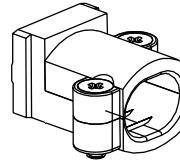
5815KDC



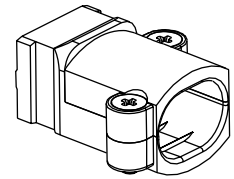
5815GDC



5825GDC

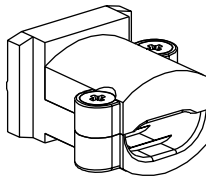


5837GDC

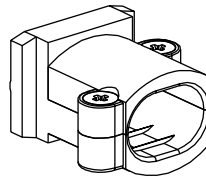


Verwendbar in Hauben Gr. 5 / Available in the hoods size 5

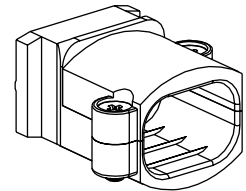
5850KDC



5850GDC



5850LDC



5850LDC	125	14-16	9-10	7,5-8,5	6,5-8
5850GDC	100	11-14	7-8	6-7	5-6,5
5850KDC	100	8-10	5-7	4-5	-
5837GDC	85	11-14	7-8	6-7	5-6
5825GDC	75	9-12	6-7	5-6	4-5
5815GDC	65	7-10	5-6	4-4,5	-
5815KDC	65	4-7	4-5	3,5-4	-
Artikel-Nr. Article-No.	Fenster für Litzen, mm <sup>2</sup> Windows for laces, mm <sup>2</sup>				
		für Kabeldurchmesser, mm / for cable diameter, mm			

Toleranzen / tolerances:		Projektion / projection: 		Maßstab / scale 1:1	Werkstoff / material: Zinkdruckguss / Zinc alloy
					Oberfläche mm <sup>2</sup> / surface mm <sup>2</sup> : Veredelung / refinement: roh / raw
		Maßangaben in: dimension units mm		Artikel / article: Kabelklemmen Gr.1-5 Cable clamp size 1-5	
		Datum / date Name / name			
		Bearb. / drawn Gepr. / checked			
		07.01.2013 07.01.2013			
		Ast		Zeichnungs-Nr. / drawing no. 58XXXDC-P	
03 neu gezeichnet		07.01.13		Blatt / sheet 1/1	
Index Änderung / modification		Datum		Ersatz für / substitute to: 58XXXDC	
		Name		DIN A4	
		Kd.-Zg.			

**PROVERTHA**  
CONNECTORS, CABLES & SOLUTIONS