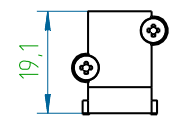
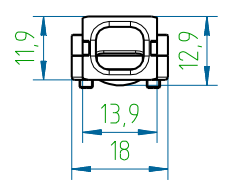
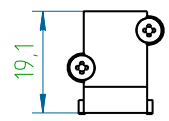
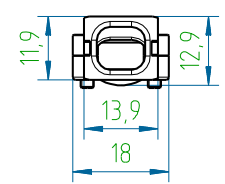


The reproduction, distribution and utilization of this document as well as the communication of its contents to others without express authorization is prohibited. Offenders will be held liable for the payment of damages. All rights reserved in the event of the grant of a patent, utility model or design.

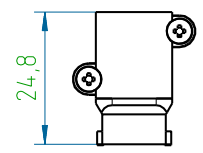
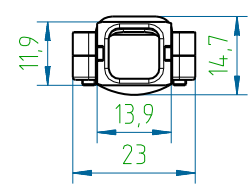
5815KDC001



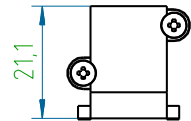
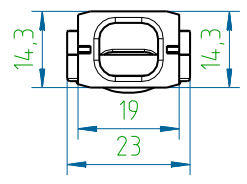
5815GDC001



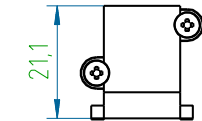
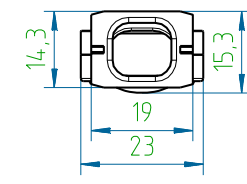
5837GDC001



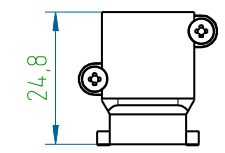
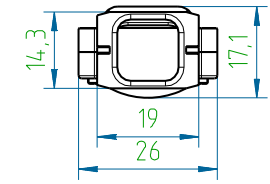
5850KDC001



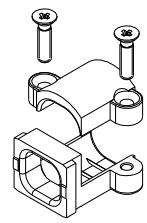
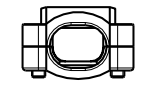
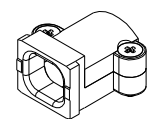
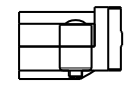
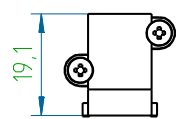
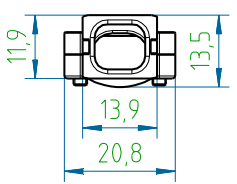
5850GDC001



5850LDC001



5825GDC001



Veredelung / refinement:

- 58XXXDCVPE - Gehäuse roh / Case raw
- 58XXXDCNVPE - Gehäuse vernickelt / Case nickel-plated
- Schrauben verzinkt / screws zinc-plated

Temperaturbereich: -40°C bis +90°C / Temperature range: -40°C to +90°C
 Verpackungseinheit 50 Stück: VPE=000 - als Schüttgut, VPE=001 - als Set
 Packing unit 50 Pcs: VPE=000 - bulk packing, VPE=001 - as Set

| | | | | | | | |
|-----------------------------------|--|---|---|------|---------|-------|---------------------|
| 5850LDC001 | 5 | 125 | 14-16 | 9-10 | 7,5-8,5 | 6,5-8 | 20 |
| 5850GDC001 | 5 | 100 | 11-14 | 7-8 | 6-7 | 5-6,5 | 16 |
| 5850KDC001 | 5 | 100 | 8-10 | 5-7 | 4-5 | | 21 |
| 5837GDC001 | 1-4 | 85 | 11-14 | 7-8 | 6-7 | 5-6 | 16 |
| 5825GDC001 | 1-4 | 75 | 9-12 | 6-7 | 5-6 | 4-5 | 12 |
| 5815GDC001 | 1-4 | 65 | 7-10 | 5-6 | 4-4,5 | | 12 |
| 5815KDC001 | 1-4 | 65 | 4-7 | 4-5 | 3,5-4 | | 14 |
| PVH-Artikel-Nr. / PVH-article no. | Verwendbar in Hauben Gr. / available in the hoods size | Fenster für Litzen / Windows for laces, mm ² | 0 | 00 | 000 | 0000 | Gewicht / Weight, g |
| | | | für Kabeldurchmesser / for cable diameter, mm | | | | |

| | | | | | |
|---|--|--|--|---|--|
| Toleranzen / tolerances: DIN ISO 2768-m | | Projektion / projection: Maßstab / scale: 1:1 | | Werkstoff / material: Zinkdruckguss / Zinc alloy | |
| Maßangaben in: dimension units: mm | | Oberfläche cm ² / surface cm ² : Veredelung / refinement: Gewicht g / weight g | | s. Text s. Tab. | |
| Bezeichnung: name: Kabelklemmen Cable clamp | | Maßangaben in: dimension units: mm | | Benennung: name: Kabelklemmen Cable clamp | |
| 01 neu gezeichnet 10.02.2014 Ast | | Datum / date: 10.02.2014 Name / name: Straub | | Zeichnungs-Nr. / drawing no.: 58XXXDCVPE-P | |
| Index Änderung / modification | | Datum Name | | Blatt / sheet: 1/1 | |
| Kd.-Zg. | | Ersatz für / substitute to: | | DIN A3 | |

Weitergabe sowie Vervielfältigung dieses Dokuments, Verwertung und Mitteilung seines Inhalts sind verboten, soweit nicht ausdrücklich gestattet. Zuwiderhandlungen verpflichten zu Schadensersatz. Alle Rechte für den Fall der Patent-, Gebrauchsmuster- oder Geschmacksustereintragung vorbehalten.